

REFERENCE SYSTEMS		SIGN.
HORIZONTAL	Origem	
VERTICAL	Origem	

± 0.00 - 15.30 U. G.P.  
 COORDENADAS DO CENTRO DA CHAMINÉ  
 X = 4033.80  
 Y = 9155

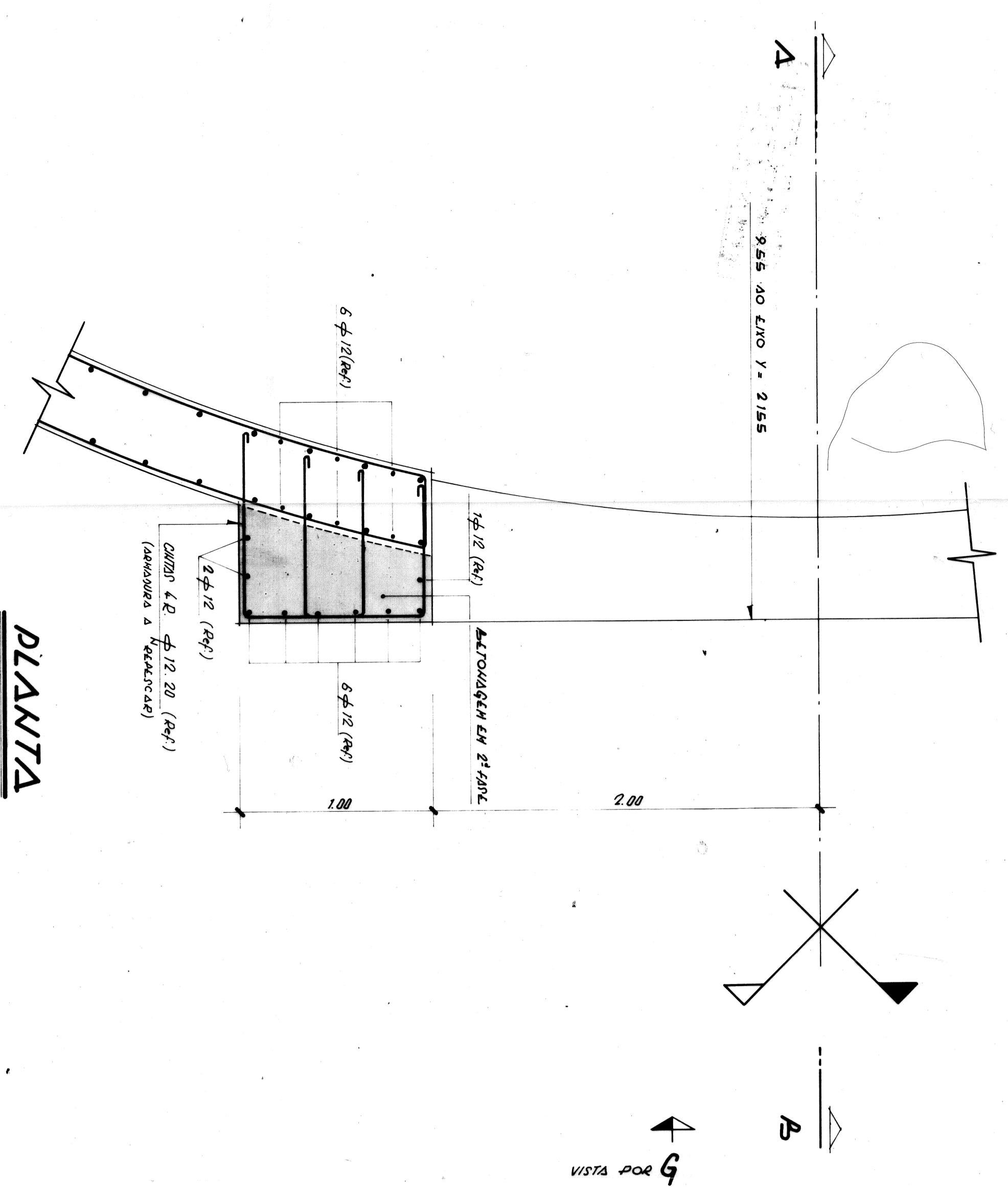
VER. DCS# 1/25 41720.26.1, 41723.29.1  
 e 73-4335, 275 (Des. de VIGILÂ)

AGDS : { φ 450 (4x4000000)  
 ALTO : 4300.1

RECORRIMENTO :  
 JUST. (FACE EXT. : 3.5 cm  
 (FACE INT. : 3.8 cm

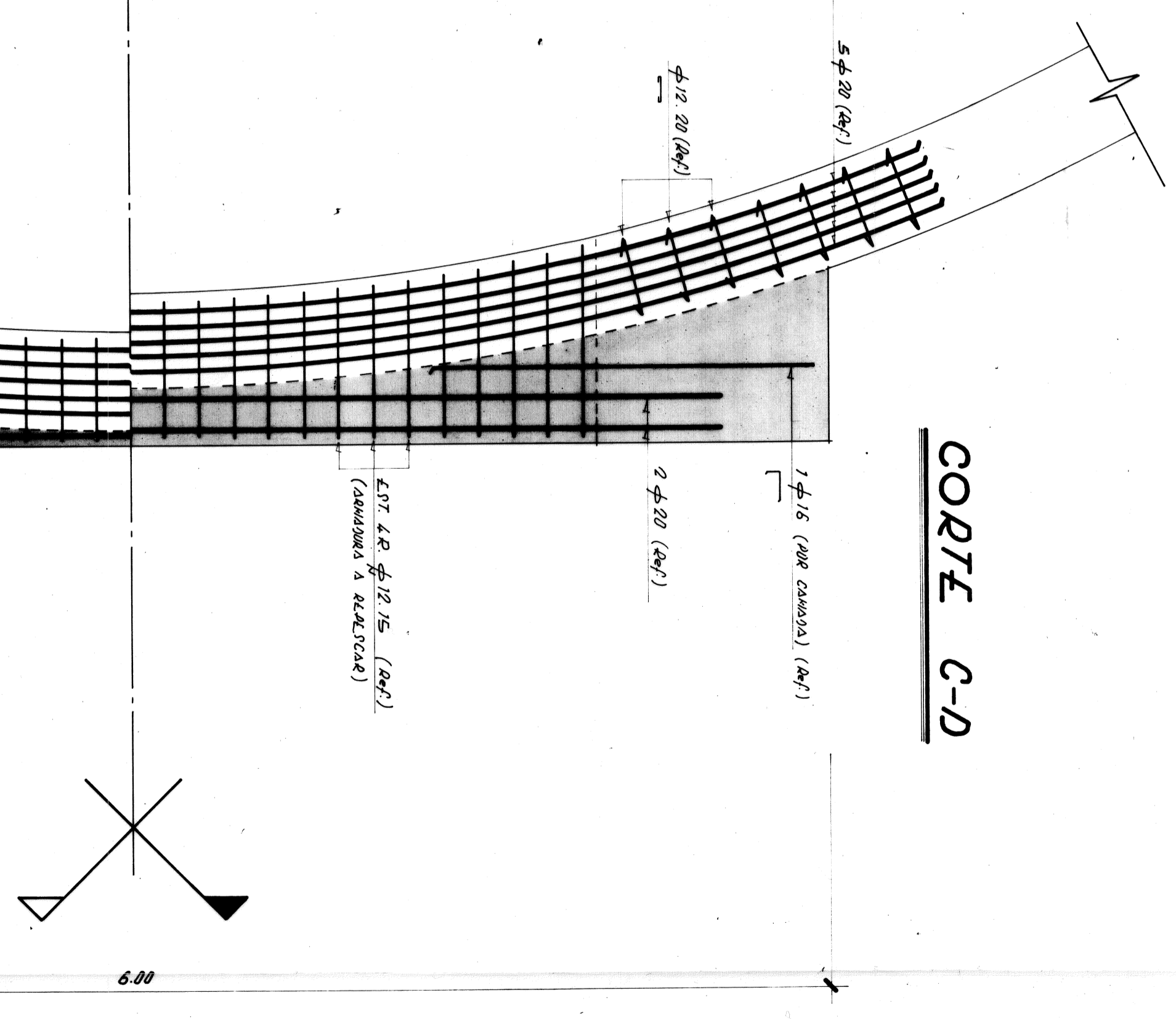
COMPRIMENTOS DE ARMADURA :  
 450 ASL : 30 φ  
 450 ALD : 40 φ

**PLANTA**

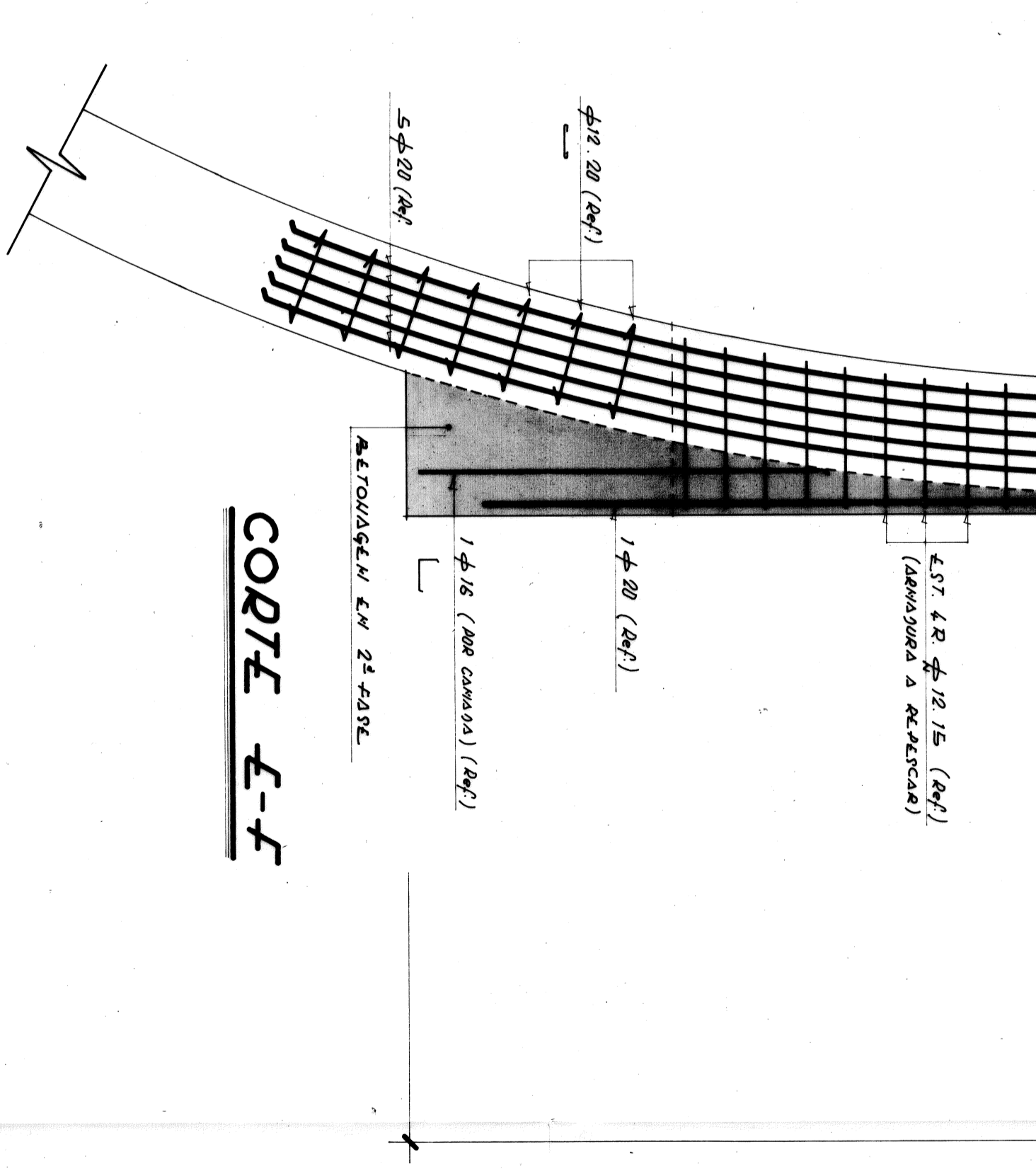


VISTA POR 6

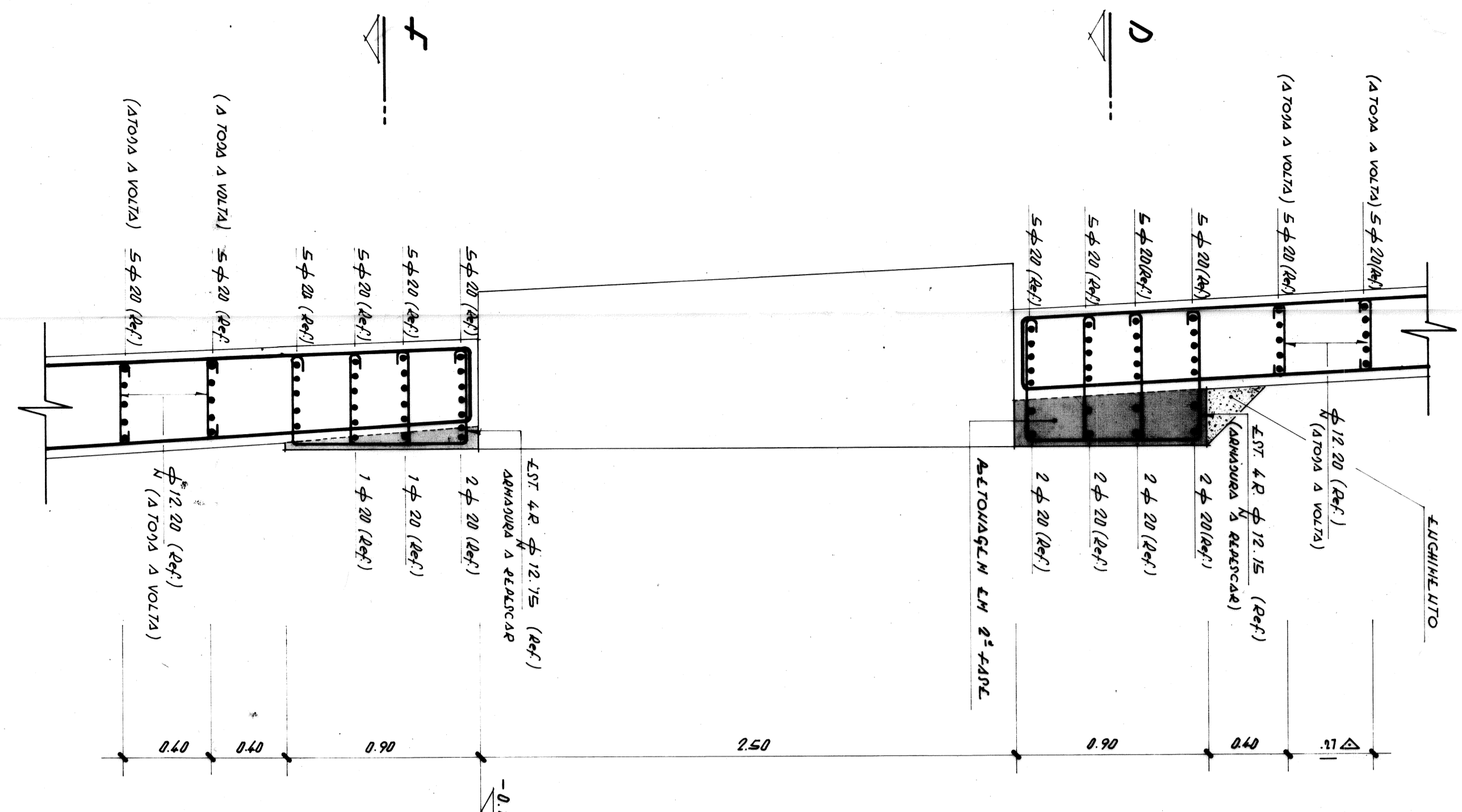
**CORTE C-D**



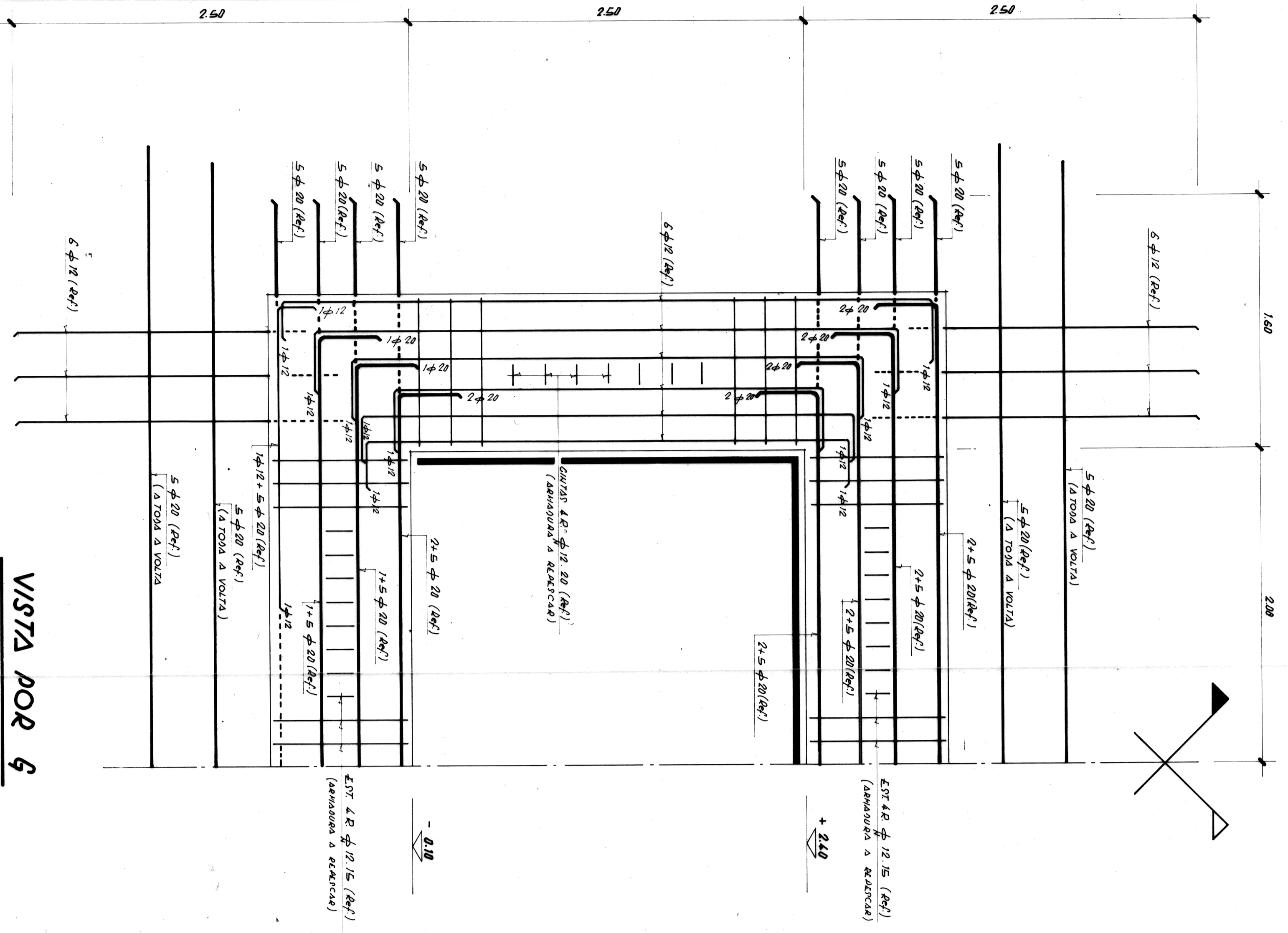
**CORTE E-F**



**CORTE A-B**



**VISTA POR 6**



**PROJEC**

PROJETO Nº: 25565

15909

**ELECTRICIDADE DE PORTUGAL**

COAL FIRED POWER PLANT SINES, UNIT 1&2

ESTRUTURA DE CONCRETO ARMADO

REVISÃO Nº 01

17/00 REVISÃO Nº 01

2000.11.24

41724.30.1

SERVIÇOS TÉCNICOS

ARMADOR Nº 4. ARMADO