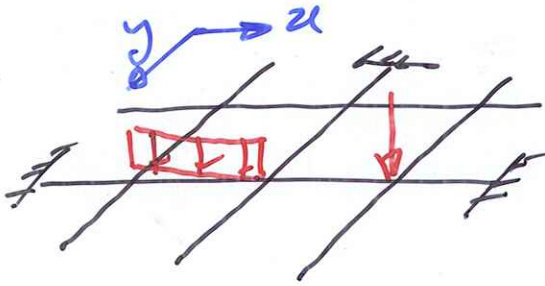


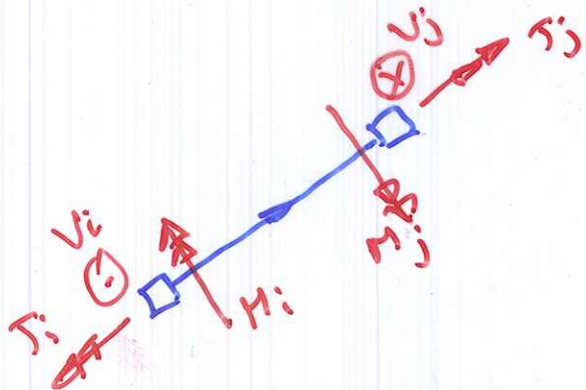
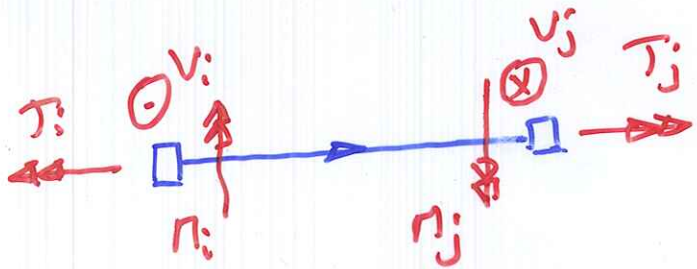
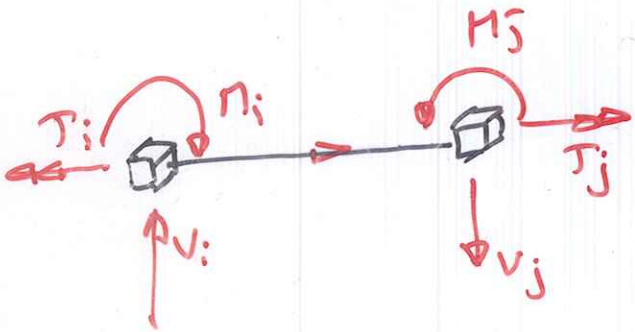
GREIJAS



DESLOCAMENTOS



ESFORÇOS

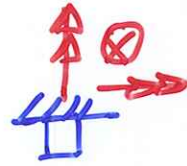


APOIOS

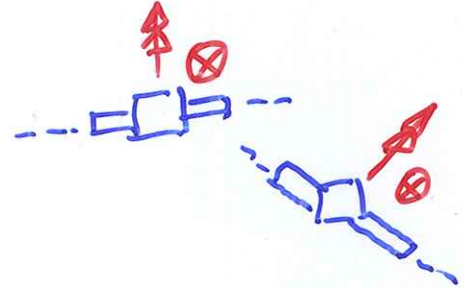
⊗ →
(DESLOCAMENTOS IMPEDIDOS)



(Encaixamento)



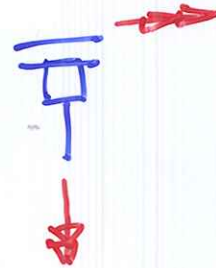
(Apoio cilíndrico)



(Apoio esférico)



(Encaixamento deslizante)



BARRAS CINEMATICAMENTE DETERMINADAS

